



## INTRODUCTION

Occupational Safety & Healthy, Inc. has been providing consultative services to protect employees for over 30 years. We are committed to excellence with decades of experience in helping our clients prevent accidents before they occur, specializing in the general, construction, and healthcare industries. It all begins with management's commitment to providing a safe workplace. Exposures are initially evaluated and recommendations made to control hazards. This also includes assistance with regulatory compliance in developing formal industry-specific safety programs and implementation. Procedures are established in the process with measures taken to mitigate losses should they occur. This has also proven successful in minimizing the potential for litigation, penalties, or fines that are costly to any company's bottom line. By providing risk solutions and support, our goal is to assist clients in preventing injuries, meet regulatory compliance, and take a systematic approach to problem-solving with an in-depth analyses at any level for companies that are committed to making safety an integral part of an efficient operation.

## SAFETY PROGRAM MANAGEMENT

Successful accident prevention is essential for achieving high productivity and low costs long term. OS&H, Inc. can help an organization identify the deficiencies that lead to accidents, offer controlling strategies, and help design benchmarking and accountability systems. Our Consultants can assist in determining achievable organizational goals, as well as the means to realize them. We review and analyze the loss history and existing programs when meeting with key people in the organization. This consultative approach identifies important areas where we reduce accidents and improve the overall Safety Program.

## REGULATORY PROGRAM COMPLIANCE AUDITS

An initial assessment of operations in conjunction with interviewing of key personnel is conducted to determine the deficiencies within the Safety Program. Physical inspections are also conducted to identify unacceptable hazards and a comprehensive report provided after each visit with formal recommendations. These areas are industry-specific for regulatory compliance and include, but are not limited to:

- Accident Investigation
- Hazard Communication
- Bloodborne Pathogen
- Employee Orientation
- Incentive Program
- Back Injury Prevention
- Hearing Conservation
- Safety Committees
- Light-Duty
- Behavior Based Safety
- Job Safety Analysis
- Lockout-Tagout
- Electrical Safety
- Fleet Safety
- Ergonomics

## EDUCATION AND TRAINING

Ongoing safety education is an important element to any successful Safety Program. That's why OS&H, Inc. has gone to great lengths in developing both onsite and online training programs tailored to meet our clients' needs. The training materials are also industry-specific, making them relevant to an employee's scope of work or responsibilities. We pride ourselves in the delivery of training that is interactive with participants including media and team competitions rather than simply presenting material that many times becomes mundane, especially when referencing regulations that are not in layman's terms.

## SAFETY INSPECTIONS

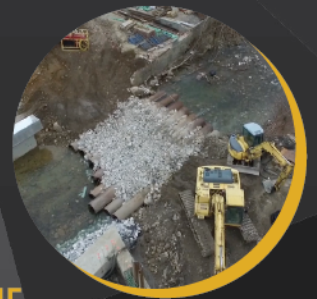
Given the ever-changing regulations applicable to any business, it's even more imperative to stay abreast of changes pertaining to standards that protect employees. Our OS&H, Inc. staff are continually updating their training and certifications in order to ease the burden associated with regulatory compliance and provide an explanation that is easy to understand of those standards. That knowledge is then used for inspections and making appropriate recommendations to comply with the regulations, but more importantly protect employees.



**OS&H**  
OCCUPATIONAL  
SAFETY & HEALTH INC.

## SERVICES

- Accident Investigation
- Accident Prevention Plan (APP)
- Activity | Job Hazard Analysis (AHA | JHA)
- Benchmarking | Loss Analysis
- Confined Space Rescue Teams
- Ergonomics Task Analysis
- Incentive Program
- Industrial Hygiene
- Injury & Illness Prevention Programs (I2P2)
- Insurance Surveys
- Jobsite Inspections
- Loss Control
- Program Development
- Regulatory Compliance
- Return-to-Work
- Risk Management
- Safety Audit
- Site Safety & Health Officer (SSHO)
- Staff Augmentation
- Safety Oversight
- Trend Analysis
- Training



## NAICS CODES

524298	Insurance Loss Prevention Services
541620	Environmental Consulting Services
541690	Other Scientific and Technical Consulting Services
561110	Office Administrative Services
541690	Safety Consulting Services
611430	Professional and Management Development Training
611699	All Other Miscellaneous Schools and Instruction
611710	Educational Support Services

## AERIAL DRONE

Our aerial drone footage has set us apart from competitors, providing an overview of jobsites using a 4k - 12 megapixel camera. This has been a game changer for many contractors in identifying hazards not previously exposed.

FAA Approved | Licensed & Insured

## QUALIFICATIONS

Associated Loss Control Management Designation (ALCM)  
Certified Safety Professional (CSP) by the Board of Certified Safety Professionals  
Certified CPR/First Aid/AED Instructor by the American Red Cross  
National Highway Institute - Advanced Workzone  
OSHA Outreach Training Institute (OTI) Authorized Instructor  
Subject Matter Expert (SME)  
Texas Workers' Compensation Commission - Approved Texas Field Safety Representative  
Arkansas Workers' Compensation Commission - Qualified Professional Safety Source



INFO@OSANDH.COM | WWW.OSANDH.COM | 865.300.9876